

**SPECIFICATIONS**

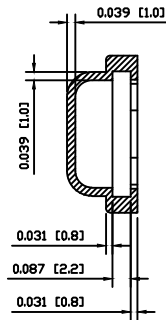
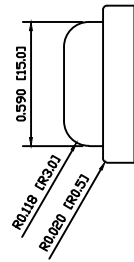
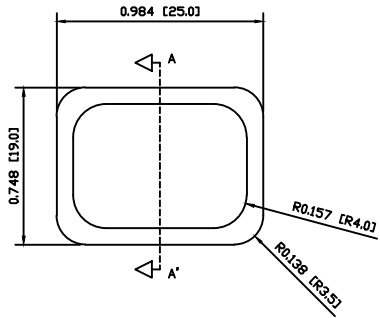
FITS:  
 RA1-A Series, With Standard Curved Actuator  
 RA1-E Series, With Standard Curved Actuator  
 RAB-E Series, With Standard Curved Actuator

**APPROVALS:**

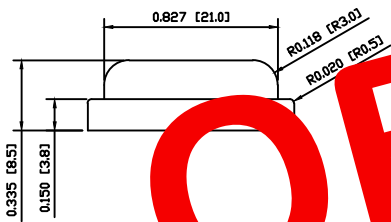
RoHS  
 COMPLIANT

**MATERIALS**

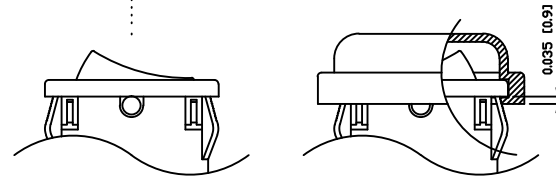
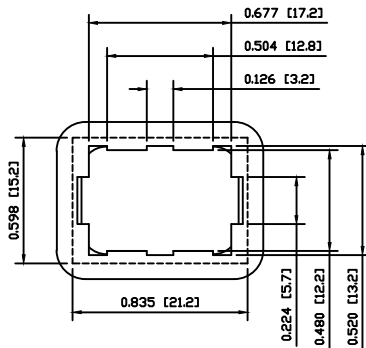
CAP:  
 HTV Silicone Rubber (SIR)



SECTION A-A'



**OBSOLETE**  
 March 2015



EXPLODED VIEW

ASSEMBLED VIEW

**E-SWITCH** | **LAMB INDUSTRIES**

DIMENSIONS		INCHES [MILLIMETERS]		TITLE	
GENERAL TOLERANCES		±0.008 [±0.2] / ±1*		ACC-P01	
SCALE	1:1	PROJECTION	1st Angle	ITEM NUMBER	03-ACCP01
DATE	APRIL 27, 2011	REVISION	A		

THE INFORMATION CONTAINED IN THIS DOCUMENT IS PROPRIETARY TO E-SWITCH AND IS NOT TO BE COPIED OR TRANSFERRED

REV.	DESCRIPTION	19880	11/04/27	CAB
A	INITIAL RELEASE	PCR	DATE	DRAWN BY